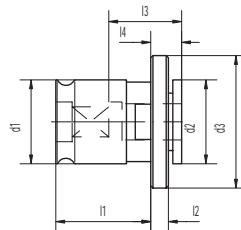


SCHNELLWECHSELEINSÄTZE OHNE SICHERHEITSKUPPLUNG  
 QUICK CHANGE TAPPING ADAPTERS WITHOUT SAFETY COUPLING  
 БЫСТРОСМЕННЫЕ РЕЗЬБОНАРЕЗНЫЕ АДАПТЕРЫ  
 БЕЗ ПРЕДОХРАНЯЮЩЕЙ МУФТЫ

ADAPTEURS A CHANGEMENT RAPIDE SANS  
 COUPLAGE DE SECURITE  
 BUSSOLA PER MASCHIARE SENZA FRIZIONE  
 快换丝锥接头不带安全连接器

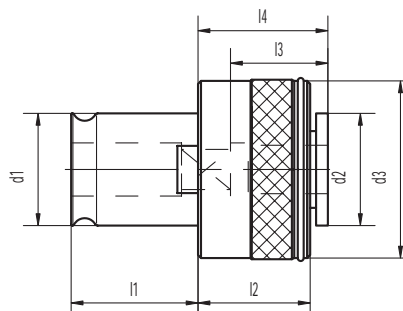
IBC



	Code N.	Top shank	∅	Size	l1	l2	l3	l4	d1	d2	d3
IBC 1	IBC1-2,80	2,8	2,1	1	21,5	4	17	7	19	19	30
	IBC1-3,15	3,15	2,5	1	21,5	4	17	7	19	19	30
	IBC1-3,50	3,5	2,7	1	21,5	4	17	7	19	19	30
	IBC1-4,0	4	3	1	21,5	4	17	7	19	19	30
	IBC1-4,0	4	3,15	1	21,5	4	17	7	19	19	30
	IBC1-4,5	4,5	3,4	1	21,5	4	17	7	19	19	30
	IBC1-5,0	5	4	1	21,5	4	17	7	19	19	30
	IBC1-5,5	5,5	4,3	1	21,5	4	17	7	19	19	30
	IBC1-6,0	6	4,9	1	21,5	4	17	7	19	19	30
	IBC1-6,3	6,3	5	1	21,5	4	17	7	19	19	30
	IBC1-7,0	7	5,5	1	21,5	4	17	7	19	19	30
	IBC1-8,0	8	6,2	1	21,5	4	17	7	19	19	30
	IBC1-8,0	8	6,3	1	21,5	4	17	7	19	19	30
	IBC1-9,0	9	7	1	21,5	4	17	7	19	19	30
IBC1-10	10	8	1	21,5	4	17	7	19	19	30	
IBC1-11	11	9	1	21,5	4	17	7	19	19	30	
IBC1-12	12	9	1	21,5	4	17	7	19	19	30	
IBC 2	IBC2-6,0	6	4,9	2	35	5	30	11	31	30	48
	IBC2-6,5	6,3	5	2	35	5	30	11	31	30	48
	IBC2-7,0	7	5,5	2	35	5	30	11	31	30	48
	IBC2-8,0	8	6,2	2	35	5	30	11	31	30	48
	IBC2-9,0	9	7	2	35	5	30	11	31	30	48
	IBC2-10	10	8	2	35	5	30	11	31	30	48
	IBC2-11	11	9	2	35	5	30	11	31	30	48
	IBC2-12	12	9	2	35	5	30	11	31	30	48
	IBC2-12,5	12,5	10	2	35	5	30	11	31	30	48
	IBC2-14	14	11	2	35	5	30	11	31	30	48
	IBC2-16	16	12	2	35	5	30	11	31	30	48
	IBC2-16	16	12,5	2	35	5	30	11	31	30	48
IBC2-18	18	14,5	2	35	5	30	11	31	30	48	
IBC2-20	20	16	2	35	5	30	11	31	30	48	
IBC 3	IBC3-11	11	9	3	55,5	6	44	14	48	48	70
	IBC3-12	12	9	3	55,5	6	44	14	48	48	70
	IBC3-14	14	11	3	55,5	6	44	14	48	48	70
	IBC3-16	16	12	3	55,5	6	44	14	48	48	70
	IBC3-18	18	14,5	3	55,5	6	44	14	31	30	70
	IBC3-20	20	16	3	55,5	6	44	14	48	48	70
	IBC3-22	22	18	3	55,5	6	44	14	48	48	70
	IBC3-25	25	20	3	55,5	6	44	14	48	48	70
	IBC3-28	28	22	3	55,5	6	44	14	48	48	70
	IBC3-32	32	24	3	55,5	6	44	14	48	48	70
IBC3-36	36	29	3	5,55	6	44	14	48	48	70	

SCHNELLWECHSELEINSÄTZE MIT SICHERHEITSKUPPLUNG  
 QUICK CHANGE TAPPING ADAPTERS WITH SAFETY COUPLING  
 БЫСТРОСМЕННЫЕ РЕЗЬБОНАРЕЗНЫЕ АДАПТЕРЫ  
 С ПРЕДОХРАНЯЮЩЕЙ МУФТОЙ

ADAPTEURS A CHANGEMENT RAPIDE  
 AVEC COUPLAGE DE SECURITE  
 BUSSOLA PER MASCHIARE CON FRIZIONE  
 快换丝锥接头带安全连接器

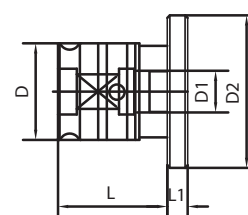


IBS

	Code N.	Top shank	$\nabla$	Size	l1	l2	l3	l4	d1	d2	d3
IBS 1	IBS1-3,5	3,5	2,7	1	21,5	25	17	25	19	19	32
	IBS1-4,5	4,5	3,4	1	21,5	25	17	25	19	19	32
	IBS1-5,5	5,5	4,3	1	21,5	25	17	25	19	19	32
	IBS1-6	6	4,9	1	21,5	25	17	25	19	19	32
	IBS1-7	7	5,5	1	21,5	25	17	25	19	19	32
	IBS1-8	8	6,2	1	21,5	25	17	25	19	19	32
	IBS1-9	9	7	1	21,5	25	17	25	19	19	32
	IBS1-10	10	8	1	21,5	25	17	25	19	19	32
	IBS1-11	11	9	1	21,5	25	17	25	19	19	32
	IBS 2	IBS2-6	6	4,9	2	35	31	30	34	31	30
IBS2-7		7	5,5	2	35	31	30	34	31	30	50
IBS2-8		8	6,2	2	35	31	30	34	31	30	50
IBS2-9		9	7	2	35	31	30	34	31	30	50
IBS2-10		10	8	2	35	31	30	34	31	30	50
IBS2-11		11	9	2	35	31	30	34	31	30	50
IBS2-12		12	9	2	35	31	30	34	31	30	50
IBS2-14		14	11	2	35	31	30	34	31	30	50
IBS2-16		16	12	2	35	31	30	34	31	30	50
IBS2-18		18	14,5	2	35	31	30	34	31	30	50
IBS 3	IBS3-11	11	9	3	55,5	41	44	45	48	48	72
	IBS3-12	12	9	3	55,5	41	44	45	48	48	72
	IBS3-14	14	11	3	55,5	41	44	45	48	48	72
	IBS3-16	16	12	3	55,5	41	44	45	48	48	72
	IBS3-18	18	14,5	3	55,5	41	44	45	48	48	72
	IBS3-20	20	16	3	55,5	41	44	45	48	48	72
	IBS3-22	22	18	3	55,5	41	44	45	48	48	72
	IBS3-25	25	20	3	55,5	41	44	45	48	48	72
	IBS3-28	28	22	3	55,5	41	44	45	48	48	72

REDUZIERUNGEN FÜR EINSÄTZE  
 REDUCTIONS FROM ADAPTER TO ADAPTER  
 ПЕРЕХОДНИКИ К АДАПТЕРАМ

REDUCTIONS POUR ADAPTEURS  
 RIDUZIONI DA BUSSOLA A BUSSOLA  
 接头与接头之间的缩小



Code N.	D	D1	D2	L	L1
IBC1/0	19	13	30	21,5	4
IBC2/1	31	19	48	35	5
IBC3/2	48	31	70	55,5	6

Tap Shank Dimension ISO 529 - 1975

Dimension Dia. x Square	Metric		UNC		UNF		BSW		BSF		BA	
		Shank dia. enlarged		Shank dia. enlarged		Shank dia. enlarged		Shank dia. enlarged		Shank dia. enlarged		Shank dia. enlarged
3.15 x 2.5	M4	M3	-	No. 4-40	-	No. 4-48	-	-	-	-	-	No. 5
3.55 x 2.8	M4.5	M3.5	No. 8-32	No. 5-40	No. 8-36	No. 5-44	-	-	-	-	No. 3	-
4 x 3.15	M5	M4	No. 10-24	No. 6-32	No. 10-32	No. 6-40	3/16"-24	-	3/16"-32	-	No. 2	No. 4
4.5 x 3.55	M6	-	No. 12-24	-	No. 12-28	-	-	-	7/32"-28	-	No. 1	-
5 x 4	M6	-	1/4"-20	No. 8-32	1/4"-28	No. 3-36	1/4"-20	-	1/4"-26	-	No. 0	No. 3
5.6 x 4.5	-	M5	-	No. 10-24	-	No. 10-32	-	3/16"-24	-	3/16"-32	-	No. 2
6.3 x 5	M8	M6	5/16"-18	1/4"-20	5/16"-24	1/4"-28	5/16"-18	1/4"-20	5/16"-22	1/4"-26	-	No. 1
7.1 x 5.6	-	-	3/8"-16	-	3/8"-24	-	3/8"-16	-	3/8"-20	9/32"-36	-	No. 0
8 x 6.3	M10	M8	7/16"-14	5/16"-18	7/16"-20	-	7/16"-14	5/16"-18	7/16"-18	5/16"-22	-	-
9 x 7.1	M12	-	1/2"-13	-	1/2"-20	-	1/2"-12	-	1/2"-12	-	-	-
10 x 8	-	M10	-	3/8"-16	-	3/8"-24	-	3/8"-16	-	3/8"-20	-	-
11.2 x 9	M14	-	9/16"-12	-	9/16"-18	-	9/16"-12	-	9/16"-16	-	-	-
12.5 x 10	M16	-	5/8"-11	-	5/8"-18	-	5/8"-11	-	3/8"-14	-	-	-
14 x 11.2	M18	-	3/4"-10	-	3/4"-16	-	11/16"-11	-	11/16"-14	-	-	-
16 x 12.5	M20	-	-	-	-	-	3/4"-10	-	3/4"-12	-	-	-
18 x 14	M22	-	7/8"-9	-	7/8"-14	-	7/8"-9	-	7/8"-11	-	-	-
20 x 16	M24	-	1"-8	-	1"-12	-	1"-8	-	1"-10	-	-	-
22.4 x 18	M27	-	1 1/8"-7	-	1 1/8"-12	-	1 1/8"-7	-	1 1/8"-9	-	-	-
25 x 20	M30	-	-	-	-	-	-	-	-	-	-	-
28 x 22.4	M33	-	1 1/2"-4	-	1 1/2"-12	-	1 1/2"-7	-	1 1/2"-9	-	-	-
31.5 x 25	M36	-	1 3/8"-6	-	1 3/8"-12	-	-	-	1 3/8"-8	-	-	-
	M39	-	1 1/2"-6	-	1 1/2"-12	-	1 1/2"-6	-	1 1/2"-8	-	-	-
	M42	-	-	-	-	-	-	-	1 3/8"-8	-	-	-
	M45	-	1 3/4"-5	-	-	-	1 3/4"-5	-	1 3/4"-7	-	-	-
	M48	-	-	-	-	-	-	-	-	-	-	-

Tap Shank Dimension DIN

Dimension Dia. x Square	DIN 352	DIN 353	DIN 371	DIN 374	DIN 376	DIN 2182	DIN 2183
3.5 x 2.7	M3	-	M3	M5	M5	1/8"	-
4 x 3	M4	-	M3.5	-	-	-	-
4.5 x 3.4	M4	-	M4	M6	M6	5/32"	1/4"
	M5	-	M5	-	-	7/32"	-
6 x 4.9	M6	-	M6	-	-	-	-
	M8	-	-	M8	M8	-	-
7 x 5.5	M10	G 1/8"	-	M10	M10	1/4"	3/8"
8 x 6.2	-	-	M8	-	-	5/16"	7/16"
9 x 7	M12	-	-	M12	M12	3/8"	1/2"
10 x 8	-	-	M10	-	-	-	-
11 x 9	M14	G 1/4"	-	M14	M14	-	9/16"
12 x 9	M16	G 3/8"	-	M16	M16	-	5/8"
14 x 11	M18	-	-	M18	M18	-	11/16"
16 x 12	M20	G 1/2"	-	M20	M20	-	13/16"
18 x 14.5	M22	G 5/8"	-	M22	M22	-	7/8"
	M24	-	-	M24	M24	-	15/16"
20 x 16	M27	G 3/4"	-	M27	M27	-	1"
22 x 18	M30	G 7/8"	-	M30	M30	-	1 1/8"
26 x 20	M33	G 1"	-	M33	M33	-	1 1/2"
28 x 22	M36	G 1 1/8"	-	M36	M36	-	1 3/8"
32 x 24	M39	G 1 1/8"	-	M39	M39	-	1 1/2"
	M42	-	-	M42	M42	-	1 3/8"
36 x 29	M45	G 3/4"	-	M45	M45	-	1 3/4"
	M48	G 1 1/2"	-	M48	M48	-	1 7/8"
	-	G 1 3/4"	-	-	-	-	-
	-	G 2"	-	-	-	-	-

Tap Shank Dimensions				ANSI (US Standards)				Tap Shank Dimensions (JIS Standards)				
Dimension in Inch. Dia. x Square		Metric Conversions		Dimension in Inch. Dia. x Square		Metric Conversions		Dimension in mm. Dia. x Square		Top Size		
0.141	0.110	3.59	2.80	1/8" No.6	0.590	0.442	14.99	11.23	3/4"	4.0	3.0	M 3 & M 3.5
0.168	0.131	4.27	3.33	5/32" No.8	0.652	0.489	16.57	12.43	M 20	5.0	4.0	M 4 & M 4.5
0.194	0.152	4.93	3.87	3/16" No. 10	0.688	0.515	17.47	13.09	1/2" Ps	5.5	4.5	M 5
0.220	0.165	5.59	4.20	No. 12	0.697	0.523	17.71	13.29	7/8"	6.0	4.5	M 6
0.255	0.191	6.48	4.86	1/4" No. 14	0.700	0.531	17.78	13.49	3/8"Ps	6.2	5.0	M 7 & M 8
0.312	0.234	7.94	5.95	1/16"Ps 1/8"Ps	0.760	0.570	19.31	14.48	M 24	7.0	5.5	M 9 & M 10
0.318	0.238	8.08	6.05	5/16" 3/8"	0.800	0.600	20.32	15.24	1"	8.0	6.2	M 11
0.323	0.242	8.21	6.15	5/16" 7/16"	0.896	0.672	22.76	17.07	1 1/8"	8.5	6.5	M 12
0.367	0.275	9.33	6.99	1/2"	0.906	0.679	23.02	17.25	3/4" P	10.5	8.0	M 14
0.381	0.286	9.68	7.27	3/8"	1.021	0.766	25.94	19.46	1 1/2"	12.5	10.0	M 16
0.429	0.322	10.90	8.18	9/16"	1.108	0.833	28.15	21.11	1 3/8"	14.0	11.0	M 18
0.438	0.328	11.12	8.34	1/8"Ps	1.125	0.843	28.58	21.42	1" P	15.0	12.0	M 20
0.480	0.360	12.20	9.15	5/8"	1.233	0.925	31.32	23.60	1 1/2"	17.0	13.0	M 22
0.542	0.406	13.77	10.31	11/16"	1.132	0.984	33.34	25.00	1 1/4" P	19.0	15.0	M 24
0.663	0.421	14.29	10.70	1/4"Ps	1.430	1.072	36.33	27.23	1 3/4"	20.0	15.0	M 27
										23.0	23.17	M 30

TAP MASCHIO	TORQUE - MOMENTO TORCENTE Nm				
	IBS 0	IBS 1	IBS 2	IBS 3	IBS 4
M2	0,6	0,6	-	-	-
M3	1	1	-	-	-
M3,5	1,5-2	1,5-2	-	-	-
M4	1,8-3	1,8-3	-	-	-
M5	3,5-5,5	3,5-5,5	-	-	-
M6-M7	5,5-9	5,5-9	5,5-9	-	-
M8-M9	14-18	14-18	14-18	-	-
M10-M11	21-25	21-25	21-25	-	-
M12	21-25	33-39	33-39	33-39	-
M14	-	45-50	45-50	45-50	-
M16	-	45-50	50-57	45-50	-
M18	-	-	80-87	80-87	-
M20	-	-	90-100	90-100	90-100
M22	-	-	100-110	100-110	100-110
M24	-	-	100-110	140-150	140-150
M27	-	-	-	150-160	150-160
M30	-	-	-	240-250	240-250
M33	-	-	-	260-270	260-270
M36	-	-	-	260-270	350-400
M39	-	-	-	260-270	380-430
M42	-	-	-	-	500-550
M45	-	-	-	-	550-600
M48	-	-	-	-	630-680
M52	-	-	-	-	-



- Mit den hier aufgeführten Werten sind alle unsere SWE's voreingestellt. Sollten Sie einmal eine andere Einstellung wünschen, so wollen Sie dies bitte bei Bestellung angeben.



- The calibration values shown in the table are the average values produced during testing. Alternative calibration values should be requested when placing the order.



- Значения по калибровке, указанные в таблице, являются усредненными, полученными во время тестирования. Если нужны другие значения, указывайте при заказе.



- Les valeurs de tarage indiqués sur le tableau sont les valeurs réalisées pendant le montage. Pour tarages différents est nécessaire l'indiquer sur la commande.



- I valori in tabella sono quelli realizzati in fase di montaggio. Per tarature diverse siete pregati di farne richiesta al momento dell'ordine.



- 表格中显示的校对数值是测量中产生的平均值。如需其他校对值可在下单时提出要求。